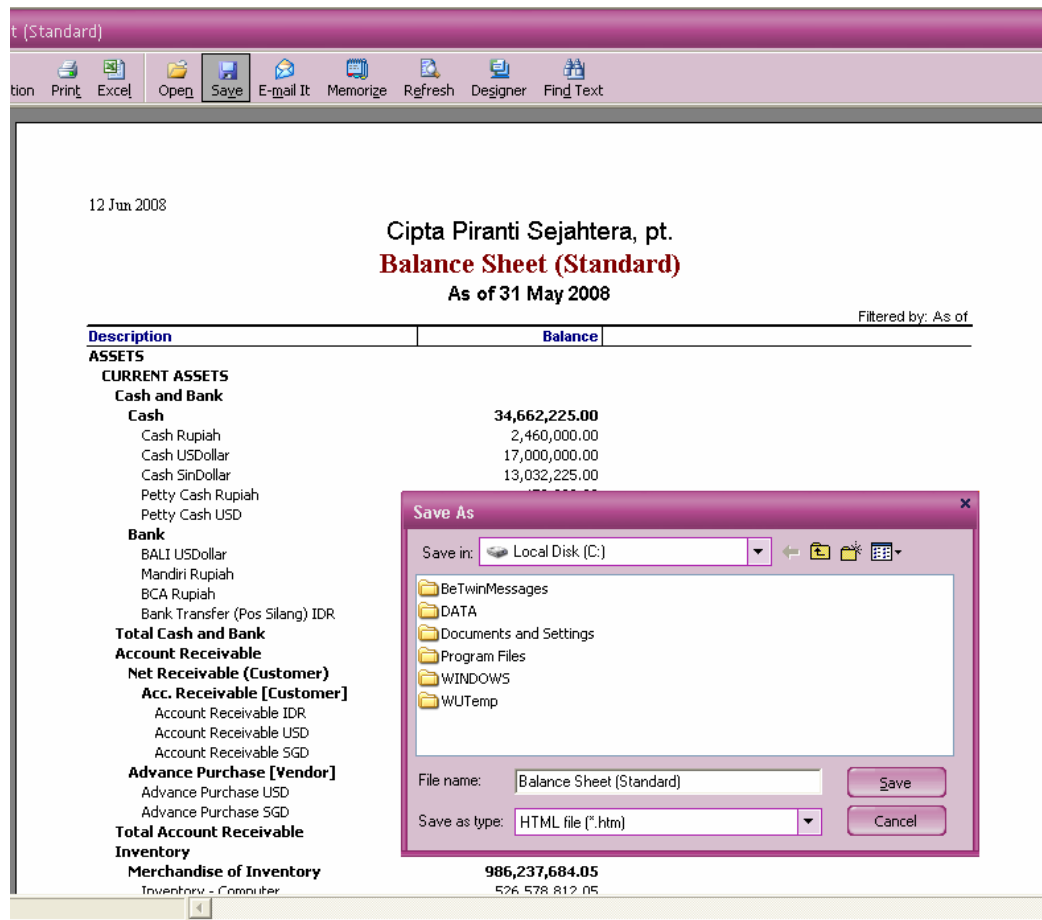


EXPORT REPORT KE OPEN OFFICE [OpenOffice.org Calc]

Bagi Anda pengguna Open Office yang ingin mengekspor report ACCURATE ke OpenOffice.org Calc, berikut ini langkah – langkah yang dapat Anda lakukan :

1. Buka tampilan laporan ACCURATE yang ingin di export, lalu simpan laporan [report] yang ingin Anda ekspor tersebut ke dalam bentuk file html

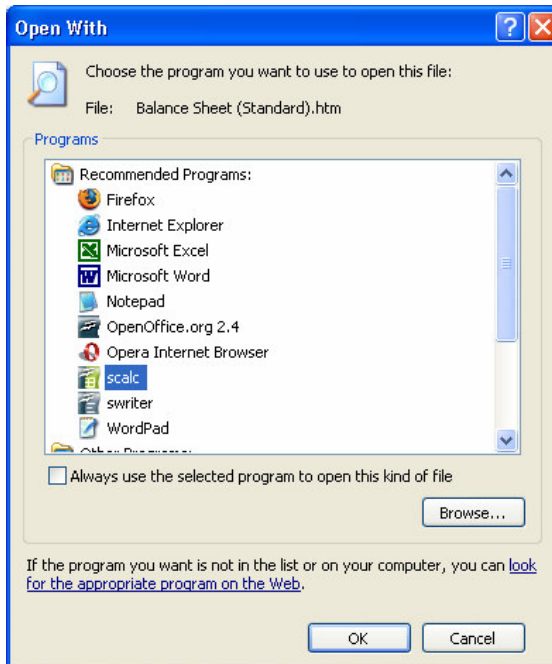
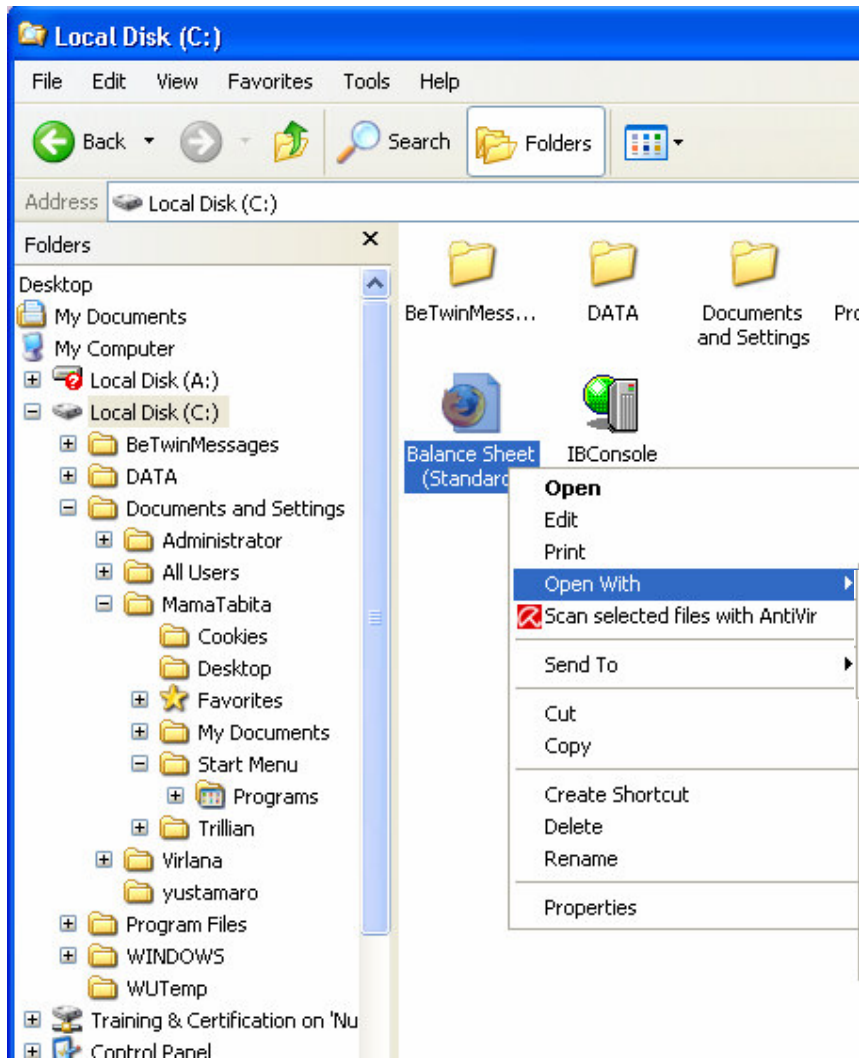


The screenshot displays the OpenOffice Calc interface with a balance sheet report. The report title is "Cipta Piranti Sejahtera, pt. Balance Sheet (Standard) As of 31 May 2008". The report is filtered by "As of". The table below shows the assets section:

Description	Balance
ASSETS	
CURRENT ASSETS	
Cash and Bank	
Cash	34,662,225.00
Cash Rupiah	2,460,000.00
Cash USDollar	17,000,000.00
Cash SinDollar	13,032,225.00
Petty Cash Rupiah	
Petty Cash USD	
Bank	
BALI USDollar	
Mandiri Rupiah	
BCA Rupiah	
Bank Transfer (Pos Silang) IDR	
Total Cash and Bank	
Account Receivable	
Net Receivable (Customer)	
Acc. Receivable [Customer]	
Account Receivable IDR	
Account Receivable USD	
Account Receivable SGD	
Advance Purchase [Vendor]	
Advance Purchase USD	
Advance Purchase SGD	
Total Account Receivable	
Inventory	
Merchandise of Inventory	986,237,684.05
Inventory - Computer	526,578,812.05

The "Save As" dialog box is open, showing the file name "Balance Sheet (Standard)" and the save type "HTML file (*.htm)". The save location is "Local Disk (C:)" and the file is being saved in the "WUTemp" folder.

2. Untuk membuka file html yang sudah disimpan, berikut cara yang dapat Anda lakukan:
 - a. Buka menu jelajah [explorer], search file html yang tadi sudah disimpan,
 - b. Buka file html tersebut dengan cara klik kanan, kemudian pilih 'Open With', lalu klik 'Choose Program' kemudian klik tombol 'Browse', setelah itu, cari folder Open Office | Program | Kemudian pilih Scalc.
 - c. Perhatikan gambar di bawah ini :



TAMPILAN REPORT – OpenOffice.org Calc

Balance Sheet (Standard) - OpenOffice.org Calc

File Edit View Insert Format Tools Data Window Help

Times New Roman 10 B / U

HTML_tables f(x) Σ = 06/12/2008

	A	B	C
1	06/12/08		
2	<u>Cipta Piranti Sejahtera, pt.</u>		
3	Balance Sheet (Standard)		
4	As of 31 May 2008		
5	Filtered by: As of		
6	Description	Balance	
7	ASSETS		
8	CURRENT ASSETS		
9	Cash and Bank		
10	Cash	34662225	
11	Cash Rupiah	2460000	
12	Cash USDollar	17000000	
13	Cash SinDollar	13032225	
14	Petty Cash Rupiah	470000	
15	Petty Cash USD	1700000	
16	Bank	172544407.26	
17	BALI USDollar	20691419.1	
18	Mandiri Rupiah	69250000	
19	BCA Rupiah	82601422.16	
20	Bank Transfer (Pos Silang) IDR	1566	
21	Total Cash and Bank	207206632.26	
22	Account Receivable		
23	Net Receivable (Customer)	322877333.1	
24	Acc. Receivable [Customer]	322877333.1	
25	Account Receivable IDR	95953720	
26	Account Receivable USD	152428363.1	
27	Account Receivable SGD	74495250	
28	Advance Purchase [Vendor]	3752973.4	
29	Advance Purchase USD	1502973.4	
30	Advance Purchase SGD	2250000	
31	Total Account Receivable	326630306.5	
32	Inventory		
33	Merchandise of Inventory	986237684.05	

Sheet1

Sheet 1 / 1 Default 100